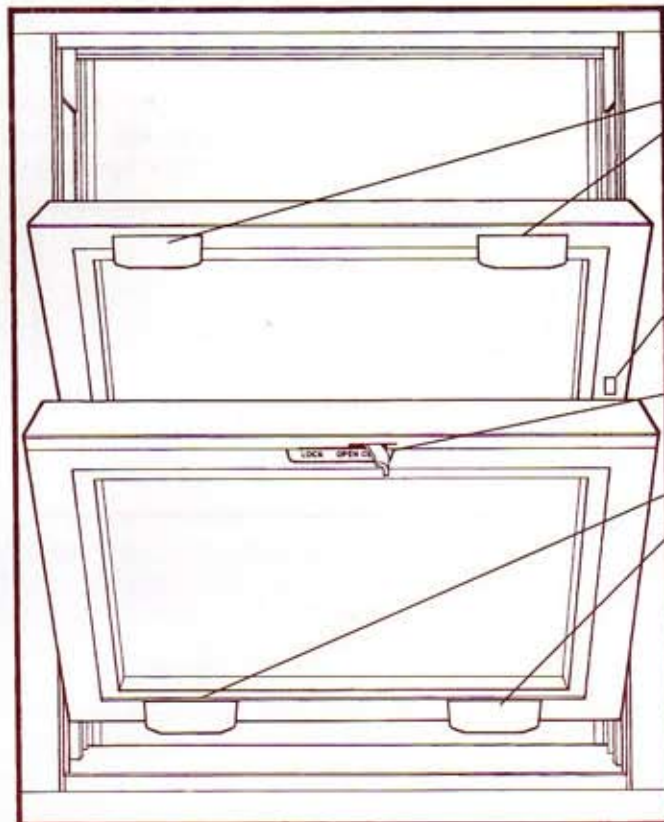


Quattro[®] Bristol V Security System

Double Hung Operate, Cleaning and Ventilation Instructions



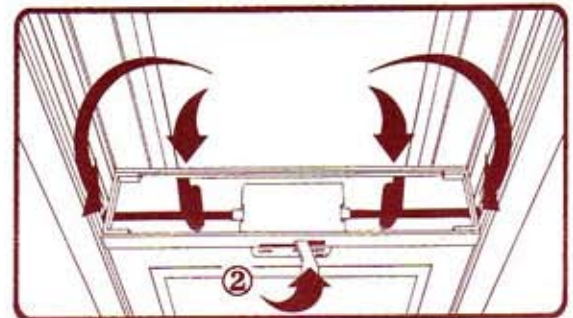
Top Sash
Lift Handles

Ventilation
Lock

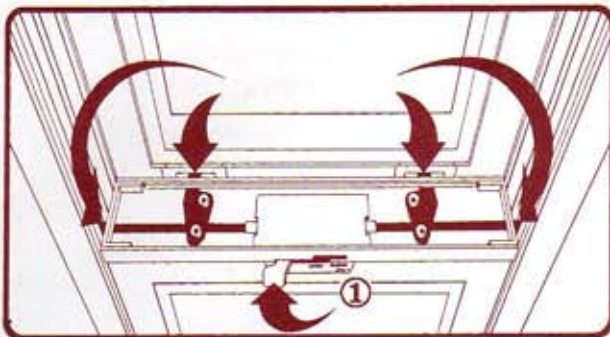
Q-IV Security Handle

Bottom Sash Lift Handles

VENTILATION:



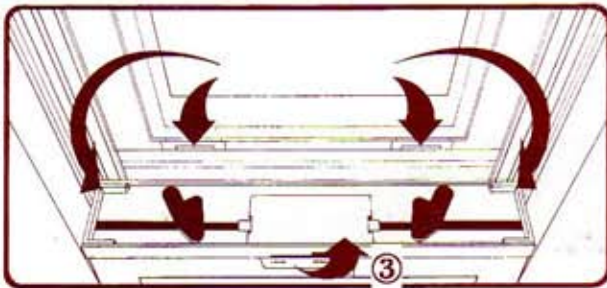
LOCKING:



1. Deadbolts are engaged for security by putting the operating handle in the "Lock" position #①. Sash cannot be moved while lock is in this location.

1. Unlock Bristol Q-IV Double Hung by sliding center operating handle to center position, #②, (open). This releases two of the four locking deadbolts.
2. Using Bottom Sash Lift Handles raise the lower sash to desired position. Top sash can also be lowered to allow air flow.
3. To lock sash in place for ventilation, pull out ventilation latch on right side of upper sash and raise bottom sash until latch stops it from going further.

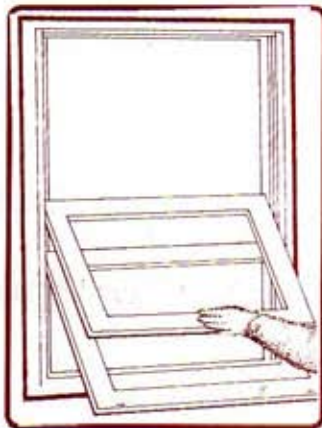
CLEANING:



Vinyl may be cleaned with a mild detergent or a mild abrasive for heavily soiled marks.

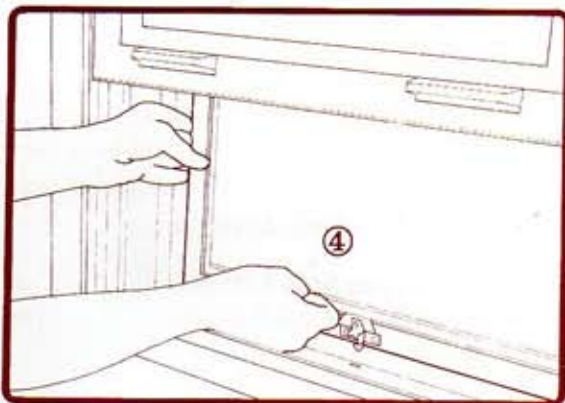
1. Put the Q-IV handle in the "Clean Only" position, #③, to release all four deadbolts.
2. Raise the bottom sash about 6" using bottom lift handles. Position hands on top of bottom sash and pull inward.

3. Use upper sash lift handles, to push top sash down about 6". Position hands on top rail of top sash and pull inward. Inside of sash can now be cleaned. (It is a good idea to secure sash by holding toward the center while cleaning.)



4. To close top sash - raise sash and push into jambs and slide up into head of the window frame until it meets a resistance.
6. To close bottom sash - Raise sash and push into jambs and slide down into sill section of window frame until it meets a resistance. See #① to lock.

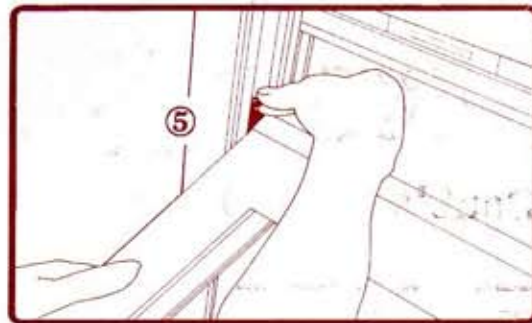
SCREEN OPENING, REMOVAL AND CLEANING AND REPLACING:



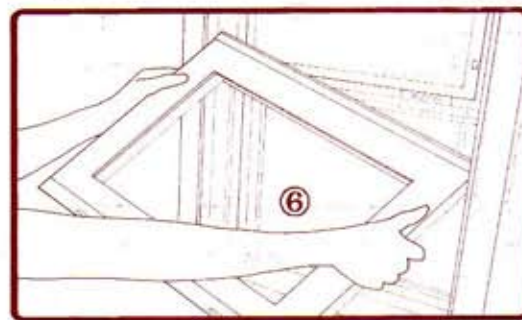
1. Follow steps 1 and 2 under Ventilation.
2. Unlock screen latch, #④ by positioning fingertips on screen rail, and lift up while moving handle enough to disengage lock from slot.

SASH REMOVAL:

Do not remove sash for cleaning, (follow clear instructions). Removal is required only for replacement of glass or emergency escape.



1. Follow steps 1 through 3 of cleaning instructions. Remove black tamper proof locks #⑤, on both sides by pulling inward with finger tip pressure.



2. Grasp side rails, swing sash up to a 45° angle, tilt sash sideways and lift clear. (Sash will only remove at the 45° angle.)
3. Repeat steps for removal of top sash.
4. Replace sash by reversing the above procedure. Be sure to return tamper proof locks and snap securely in place.

3. Grasp hand to bottom left side of screen, and push screen into track on right side using pressure to release it from the left side track.
4. Screen material can be cleaned with a soft brush and a mild detergent.
5. To replace, insert screen side with spring clips into screen rail enough to get screen to insert into opposite side rail. (Note: this may be harder to do with full screens depending on size of units. On half screen units you can lower the top sash to reach over and assist screen into the track.)

Double Hung Routine Maintenance

Important Note: Periodically clean any debris buildup away from the sill. Inspect the outside of the window for any maintenance needed. If the above maintenance is not performed, water leakage may occur. In addition, failure to perform this maintenance could void your warranty.